



SECURE LIFT®

We Secure Your Load Needs



MATERIAL HANDLING & LOAD RESTRAINT

Made Simple



A brand owned by

VIRAJ SYNTEX PVT. LTD.

(An ISO 9001 : 2015 Certified Company)



WHO WE ARE

VIRAJ SYNTEX (P) LTD. (Viraj Group) established in 1994 has managed to carve a niche for itself in terms of customer satisfaction and state of the art technology.

Viraj Group specializes in the field of Narrow Woven Fabrics & Braided Cords/Ropes, Fall Protection Equipments, Material handling & Load Restraint Systems In India, we are one of the leading suppliers of Narrow Woven Fabrics used in Parachutes and other safety equipments used by the Indian Defence Organizations.

Our Manufacturing set-up is spread over 1,50,000 sq. ft and is equipped with finest and latest weaving, braiding, twisting machines along with continuous dyeing and testing equipments. We are one of the few companies having a complete Vertical Integrated manufacturing process along with complete In house testing of all input raw material till complete finished products which gives us a strong control over quality at every step.

All our systems & process are registered to ISO 9001:2015. & ANSI and CE certifications reaffirm our commitment towards values of quality, innovation & fair Business Practices for complete customer satisfaction.

Viraj Group has expanded its marketing horizons in Europe, UK, GCC, Asia Pacific, Africa, Australia & USA.

OUR REGISTRATIONS & ACCREDITATION

Aerial Delivery Research & Development Establishment (ADRDE)



Indian Space Research Organisation (ISRO)

Ordnance Parachute Factory (OPF)



Ordnance Equipment Factory (OEF)

Directorate General of Quality Assurance (DGQA)



Bureau of Indian Standard (BIS)

Defence Material & Stores Research & Development Establishment (DMSRDE)



The National Small Industries Corporation Limited (NSIC)



Warping M/c with 200 ends creel stand



Computerised high speed precision Yarn twisting M/c



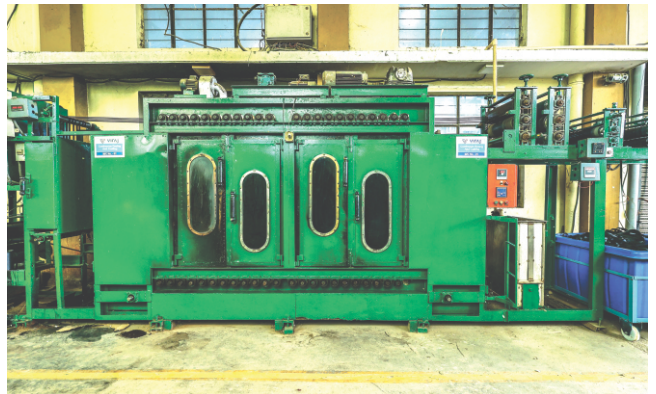
Automatic High speed Needle Looms



Continous Dyeing M/c for Nylon (Steaming Process)



Continous Dyeing M/c for Polyeter
(High Temp hot air circulated Process)



Continous Padding & Coating M/c



Screen Printing M/c (Semi Automatic)



Automatic Web Cutting



Rolling making M/c



Visual Inspection



Stitching



Packing



Weaving Section

OUR IN HOUSE TESTING & LABORATORY

VIRAJ Quality Management System (QMS) is certified to ISO 9001:2015. Quality efforts include an emphasis on continuous improvement and defect prevention.

Over the years we have implemented a full-scale R&D laboratory, manufacturing/weaving facilities along with a processing and finishing plant, redefining our role from a weaver and coater to a **total textile solution provider**.

VIRAJ In-house Quality Assurance Laboratory operates daily to assure conformance to specifications at every stage of production. Customers can be assured that all military, aerospace, Fall Protection, Cargo Lifting Slings and customer-specific requirements will be met. **We are able to provide 100% traceability of our goods** and provide all appropriate supporting documentation.



SCAN BELOW QR CODES TO SEE OUR TESTING VIDEOS



Conditioning the Sample Before Testing



Measure Breaking Strength/GPD of Yarn



Measure Yarn TPM & Yarn Ply/Fold



Measure Weight/Meter of Webbing & Cords



Measure Thickness of Webbing/Tapes



Measure Breaking Strength of Webbing



Measure Breaking Strength of Sling



Measure Breaking Strength of Round Sling



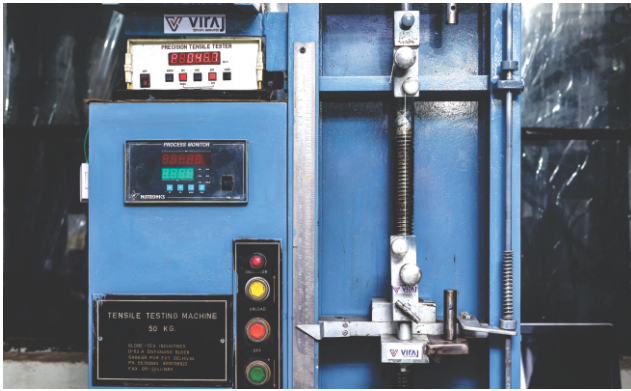
Measure Breaking Strength of Ratchet Lashing



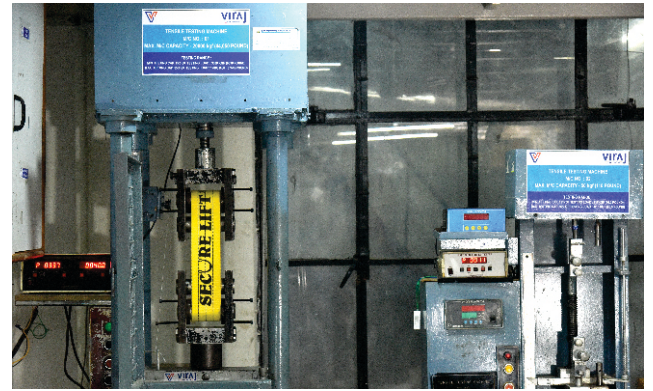
Conditioning Chamber with thermostat Range (0-110^o C)



Electronic Weighing Balance (0.001g & 0-220g)



Digital Yarn Tensile Testing , Capacity 50 kgf



Digital Tensile Testing Machines (20 Ton Max) Webbing



Chemical Analysis for Fibre Identification



Twist Tester Motorized (0-99999 counts)



Thickness Gauge (0-10 mm & LC 0.01 mm)



Digital Yarn Tension meter



Counting/Pick Glass (1.0 x 1.0 inch)



Digital Tensile Testing Machines (100 Ton Max) Sling & Webbing

POLYESTER WEBBING SLINGS

Secure Lift is heavy duty non metallic sling made of polyester having Eye-loops at the ends. They are available in different lengths and lifting capacities ranging from 1 - 48 Tons.

Polyester web slings are manufactured as per EN 1492-1, IS 15041:2001 and ASME B 30.9 standards.

PROPERTIES

- It is low weight, non corrosive, good resistance to heat, excellent electrical insulation properties and good chemical resistance as per specified standards. Working temperatures ranges -40°C to ± 100°C.
- It does not have any Fibre Optic Core. It will not create sparks in explosive or hazardous environments.
- The maximum elongation permitted is only 3% at working load limit (WLL).
- Safety Factor available are 7:1, 6:1 and 5:1.
- Each sling carries a tag indicating Batch No., Year of manufacture, WLL Load, Length, Width and Safety Factor.

MAIN FEATURES

- Each lifting sling is high strength, low stretch, colour coded, hard wearing and acid resistance.
- Each lifting slings are shrink packed.
- Each sling is supplied with a unique certificate.
- Identification tag is provided on each sling as per the standard requirements.
- Single ply slings are usually provided with an eye protection.
- All slings can be provided with protective sleeves as per required length.

Codification: Polyester slings are divided into different colours on the basis of their load taking capacity. For eg Yellow colour is for 3 Ton. In addition to the colour, the number of black lines on the slings also indicate its WLL/SWL.



SINGLE PLY SLING

Item Code	Cap.	Width	Webbing Shade	(Working Load Limit in Tons)				
				Straight Lift	Choked Lift	Basket Lift		
						Parallel	$\beta=0^\circ$ to 45°	$\beta=45^\circ$ to 60°
CODE	TON	MM	SHADE	M=WLLX1.0	M=WLLX0.8	M=WLLX2.0	M=WLLX1.4	M=WLLX1.0
VSPL/WS1P/0.5T	0.5	30	VIOLET ●	0.5	0.4	1.0	0.7	0.5
VSPL/WS1P/1.0T	1.0	60	GREEN ●	1.0	0.8	2.0	1.4	1.0
VSPL/WS1P/1.5T	1.5	90	YELLOW ●	1.5	1.2	3.0	2.1	1.5
VSPL/WS1P/2.0T	2.0	120	GREY ●	2.0	1.6	4.0	2.8	2.0
VSPL/WS1P/2.5T	2.5	150	RED ●	2.5	2.0	5.0	3.5	2.5
VSPL/WS1P/3.0T	3.0	180	BROWN ●	3.0	2.4	6.0	4.2	3.0
VSPL/WS1P/4.0T	4.0	200	BLUE ●	4.0	3.2	8.0	5.6	4.0
VSPL/WS1P/5.0T	5.0	250	ORANGE ●	5.0	4.0	10.0	7.0	5.0
VSPL/WS1P/6.0T	6.0	300	ORANGE ●	6.0	4.8	12.0	8.4	6.0

2PLY / 3PLY / 4PLY / 6PLY / 8PLY SLING

Item Code	Cap.	Wid-th	Webbing Shade	WLL (Working Load Limit in Tons)								
				Straight Lift	Choked Lift	Basket Lift			Two leg sling		Three & Four leg sling	
						Parallel	$\beta=0^\circ$ to 45°	$\beta=45^\circ$ to 60°	$\beta=0^\circ$ to 45°	$\beta=45^\circ$ to 60°	$\beta=0^\circ$ to 45°	$\beta=45^\circ$ to 60°
CODE	TON	MM	SHADE	M=WLLX1.0	M=WLLX0.8	M=WLLX2.0	M=WLLX1.4	M=WLLX1.0	M=WLLX1.4	M=WLLX1.0	M=WLLX2.1	M=WLLX1.5
VSPL/WS2P/1T	1	30	VIOLET	1.0	0.8	2.0	1.4	1.0	1.4	1.0	2.1	1.5
VSPL/WS2P/2T	2	60	GREEN	2.0	1.6	4.0	2.8	2.0	2.8	2.0	4.2	3.0
VSPL/WS2P/3T	3	90	YELLOW	3.0	2.4	6.0	4.2	3.0	4.2	3.0	6.3	4.5
VSPL/WS2P/4T	4	120	GREY	4.0	3.2	8.0	5.6	4.0	5.6	4.0	8.4	6.0
VSPL/WS2P/5T	5	150	RED	5.0	4.0	10.0	7.0	5.0	7.0	6.0	10.5	7.5
VSPL/WS2P/6T	6	180	BROWN	6.0	4.8	12.0	8.4	6.0	8.4	6.0	12.6	9.0
VSPL/WS2P/8T	8	200	BLUE	8.0	6.4	16.0	11.2	8.0	11.2	8.0	16.8	12.0
VSPL/WS2P/10T	10	250	ORANGE	10.0	8.0	20.0	14.0	10.0	14.0	10.0	21.0	15.0
VSPL/WS2P/12T	12	300	ORANGE	12.0	9.6	24.0	16.8	12.0	16.8	12.0	25.2	18.0
VSPL/WS2P/16T	16	200	BLUE	16.0	12.8	32.0	22.4	16.0	22.4	16.0	33.6	24.0
VSPL/WS2P/20T	20	250	ORANGE	20.0	16.0	40.0	28.0	20.0	28.0	20.0	42.0	30.0
VSPL/WS2P/24T	24	300	ORANGE	24.0	19.2	48.0	33.6	24.0	33.6	24.0	50.4	36.0
VSPL/WS2P/30T	30	300	ORANGE	30.0	24.0	60.0	42.0	30.0	42.0	30.0	63.0	45.0
VSPL/WS2P/40T	40	250	ORANGE	40.0	32.0	80.0	56.0	40.0	56.0	40.0	84.0	60.0
VSPL/WS2P/48T	48	300	ORANGE	48.0	38.4	96.0	67.2	48.0	67.2	48.0	100.8	72.0

M=Mode factor for symmetrical loading

WARNING

Failure to comply with this warning may result in sling failure and severe personal injury or death.

Sling should be removed from service if any of the following are visible.

- Holes, tears, cuts, snags that expose the core fibres.
- If slings rated capacity tag is missing or not readable.
- If slings has been tied into knots.
- Melting, charring or weld spatter of any part of the slings.
- Acid or alkali burns.
- Broken or worm stitching in the cover that exposes the core fibres.
- Any conditions which cause doubt as to strength of the slings.



Use only identified slings.



Move the load in a right way.



Avoid any contact with sharp edges without any protection.



Do not store slings on the ground, direct sun light, high heat sources or chemical products.

Operational Practices

- Slings should always be protected from being cut or damaged by corners & edges.
- Slings should be protected from abrasive surfaces.
- Slings should not be loaded in excess of the rated capacity. Consideration should be given to the slings angle, which affects rated capacity.
- Slings used in a basket hitch should have the load balanced to prevent slippage.
- Slings should not be dragged on the floor or over in abrasive surface.
- Slings should not be twisted, shortened, lengthened or tied into knots or joined by knotting.
- Slings should not be pulled from underloads if the load is resting on the slings.
- Slings equipped with metal fittings should not be dropped.
- Slings that appear to be damaged shall not be used unless inspected and accepted by a designated person.
- Personnel, including portions of the human body, shall be kept, from between the slings and the load, and from between the slings and the crane hook or the hoist hook.
- Personnel should not stand under the suspended load.
- Shock loading shall be avoided.
- If applicable, place blocks under load prior to setting down the load to allow removal of the slings.
- Slings should not be used at temperature above 194°F (90°C).
- When a slings is used with a shackle, it is recommended that it be used (rigged) in the bow of the shackle.
- Store slings in a cool, dry and dark place when not in use.



Check the type of product to be lifted and the working angle.



Nothing and nobody must stay under the product lifted.



Never drag a sling on the ground.



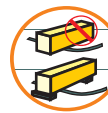
Check on the label of the sling the max working load



Never fold or knot a sling.



Any sling with a partial damage must be rejected.



Place the sling without frictions.



The product lifted must always be balanced.

ROUND SLING - TWO PATH

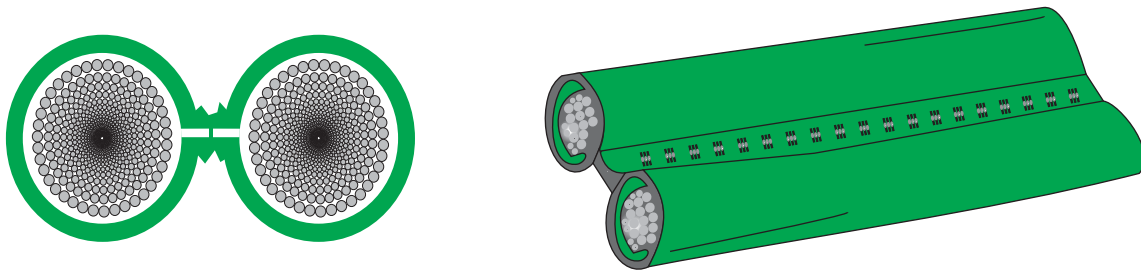
Round Slings are useful for lifting loads of a fragile nature and for those which may be damaged by the harder webbing. These are categorized in three types of Slings- Endless Slings, With Eye-Loop and Twin Path.



Two Path slings are two separate slings in one. Each path makes its own separate connection between the hook and the load and accounts for 50% of the total work load.

They are available in double core for extra abrasive resistance & long life. The load carrying polyester yarn never comes into contact with the load and if the outer cover is damaged, the inner cover provides extra protective sleeve for usage.

Such slings are used worldwide in place of wire rope slings for heavy lifts. They are 80% lighter than steel slings.



CAPACITY CHART (ROUND SLING)

Item Code	Width	Webbing Shade	WLL(Working Load Limit in Tons)				
			Straight Lift	Choked Lift	Basket Lift		
					Parallel	$\beta=0^\circ$ to 45°	$\beta=45^\circ$ to 60°
CODE	MM	SHADE	M=WLLX1.0	M=WLLX0.8	M=WLLX2.0	M=WLLX1.4	M=WLLX1.0
VSPL/RS2P/1T	18	VIOLET	1.0	0.8	2.0	1.4	1.0
VSPL/RS2P/2T	20	GREEN	2.0	1.6	4.0	2.8	2.0
VSPL/RS2P/3T	22	YELLOW	3.0	2.4	6.0	4.2	3.0
VSPL/RS2P/4T	25	GREY	4.0	3.2	8.0	5.6	4.0
VSPL/RS2P/5T	27	RED	5.0	4.0	10.0	7.0	5.0
VSPL/RS2P/6T	32	BROWN	6.0	4.8	12.0	8.4	6.0
VSPL/RS2P/8T	38	BLUE	8.0	6.4	16.0	11.2	8.0
VSPL/RS2P/10T	45	ORANGE	10.0	8.0	20.0	14.0	10.0
VSPL/RS2P/12T	60	ORANGE	12.0	9.6	24.0	16.0	12.0
VSPL/RS2P/15T	70	ORANGE	15.0	12.0	30.0	21.0	15.0
VSPL/RS2P/20T	80	ORANGE	20.0	16.0	40.0	28.0	20.0
VSPL/RS2P/25T	90	ORANGE	25.0	20.0	50.0	35.0	25.0
VSPL/RS2P/30T	100	ORANGE	30.0	24.0	60.0	42.0	30.0
VSPL/RS2P/36T	115	ORANGE	36.0	28.8	72.0	50.0	36.0
VSPL/RS2P/40T	125	ORANGE	40.0	32.0	80.0	56.0	40.0
VSPL/RS2P/50T	180	ORANGE	50.0	40.0	100.0	70.0	50.0
VSPL/RS2P/75T	200	ORANGE	75.0	60.0	150.0	105.0	75.0
VSPL/RS2P/100T	250	ORANGE	100.0	80.0	200.0	140.0	100.0

M = Mode factor for symmetrical loading

ROUND SLING - ENDLESS

Round slings are manufactured as per EN 1492-2 : 2000, IS 15041 : 2001 and ASME B 30.9 standards. The outer cover is a seamless polyester sleeve of double thickness having an excellent abrasion resistance. The core consists of a continuous hank of high tenacity polyester yarn which is strong and durable.

Due to parallel fibres in the core, the stretch experienced with round sling is less than 3% at safe working load (SWL). We manufacture round slings upto 100 tons in regular production. Round sling upto 100 tons can be manufactured on special orders.

Safety Factor - 7:1 (EN 1492 - 1 : 2000), 6:1 (IS : 15041 : 2001) and 5:1 (ASME B 30.9).



CAPACITY CHART (ROUND SLING)

Item Code	Width	Webbing Shade	←----- WLL(Working Load Limit in Tons) ----->				
			Straight Lift	Choked Lift	Basket Lift		
					Parallel	β=0° to 45°	β=45° to 60°
CODE	MM	SHADE	M=WLLX1.0	M=WLLX0.8	M=WLLX2.0	M=WLLX1.4	M=WLLX1.0
VSPL/RSE/1T	18	VIOLET	1.0	0.8	2.0	1.4	1.0
VSPL/RSE/2T	20	GREEN	2.0	1.6	4.0	2.8	2.0
VSPL/RSE/3T	22	YELLOW	3.0	2.4	6.0	4.2	3.0
VSPL/RSE/4T	25	GREY	4.0	3.2	8.0	5.6	4.0
VSPL/RSE/5T	27	RED	5.0	4.0	10.0	7.0	5.0
VSPL/RSE/6T	32	BROWN	6.0	4.8	12.0	8.4	6.0
VSPL/RSE/8T	38	BLUE	8.0	6.4	16.0	11.2	8.0
VSPL/RSE/10T	45	ORANGE	10.0	8.0	20.0	14.0	10.0
VSPL/RSE/12T	60	ORANGE	12.0	9.6	24.0	16.0	12.0
VSPL/RSE/15T	70	ORANGE	15.0	12.0	30.0	21.0	15.0
VSPL/RSE/20T	80	ORANGE	20.0	16.0	40.0	28.0	20.0
VSPL/RSE/25T	90	ORANGE	25.0	20.0	50.0	35.0	25.0
VSPL/RSE/30T	100	ORANGE	30.0	24.0	60.0	42.0	30.0
VSPL/RSE/36T	115	ORANGE	36.0	28.8	72.0	50.0	36.0
VSPL/RSE/40T	125	ORANGE	40.0	32.0	80.0	56.0	40.0
VSPL/RSE/50T	180	ORANGE	50.0	40.0	100.0	70.0	50.0
VSPL/RSE/75T	200	ORANGE	75.0	60.0	150.0	105.0	75.0
VSPL/RSE/100T	250	ORANGE	100.0	80.0	200.0	140.0	100.0

M = Mode factor for symmetrical loading

ROUND SLING - EYE LOOP

Round Sling (with Eye Loop) is a more durable form of round sling which has an advantage of an additional abrasion-resistant sleeve covering the body of standard round sling, forming two eye loops at the ends. These are easy to use and are well suited to confined spaces.

Round sling with Eye Loops are available in the same sizes and color as standard Round slings.

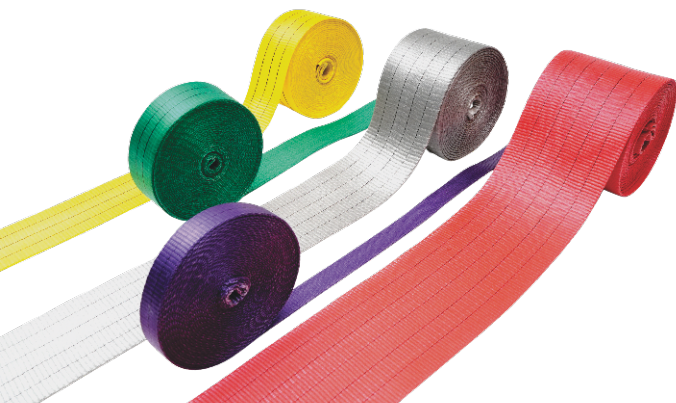
Safety Factor - 7:1 (EN 1492 - 1 : 2000), 6:1 (IS : 15041 : 2001) and 5:1 (ASME B 30.9).



CAPACITY CHART (ROUND SLING - WITH EYE LOOP)

Item Code	Width	Webbing Shade	←-----WLL(Working Load Limit in Tons)-----→				
			Straight Lift	Choked Lift	Basket Lift		
		Parallel			β=0° to 45°	β=45° to 60°	
CODE	MM	SHADE	M=WLLX1.0	M=WLLX0.8	M=WLLX2.0	M=WLLX1.4	M=WLLX1.0
VSPL/RSEL/1T	18	VIOLET	1.0	0.8	2.0	1.4	1.0
VSPL/RSEL/2T	20	GREEN	2.0	1.6	4.0	2.8	2.0
VSPL/RSEL/3T	22	YELLOW	3.0	2.4	6.0	4.2	3.0
VSPL/RSEL/4T	25	GREY	4.0	3.2	8.0	5.6	4.0
VSPL/RSEL/5T	27	RED	5.0	4.0	10.0	7.0	5.0
VSPL/RSEL/6T	32	BROWN	6.0	4.8	12.0	8.4	6.0
VSPL/RSEL/8T	38	BLUE	8.0	6.4	16.0	11.2	8.0
VSPL/RSEL/10T	45	ORANGE	10.0	8.0	20.0	14.0	10.0
VSPL/RSEL/12T	60	ORANGE	12.0	9.6	24.0	16.0	12.0
VSPL/RSEL/15T	70	ORANGE	15.0	12.0	30.0	21.0	15.0
VSPL/RSEL/20T	80	ORANGE	20.0	16.0	40.0	28.0	20.0
VSPL/RSEL/25T	90	ORANGE	25.0	20.0	50.0	35.0	25.0
VSPL/RSEL/30T	100	ORANGE	30.0	24.0	60.0	42.0	30.0
VSPL/RSEL/36T	115	ORANGE	36.0	28.8	72.0	50.0	36.0
VSPL/RSEL/40T	125	ORANGE	40.0	32.0	80.0	56.0	40.0
VSPL/RSEL/50T	180	ORANGE	50.0	40.0	100.0	70.0	50.0
VSPL/RSEL/75T	200	ORANGE	75.0	60.0	150.0	105.0	75.0
VSPL/RSEL/100T	250	ORANGE	100.0	80.0	200.0	140.0	100.0

M = Mode factor for symmetrical loading



Your Load Our
Responsibility

Ratchet lashing system is used to secure the cargo while transporting, shifting or storage. They are re-usable, light weight and are cost effective. They are completely reliable in securing all types of loads.

Ratchet lashing system comprises of ratchet buckle which provides the tensioning force, hooks and polyester webbing which is soft, strong and safe to use.

RATCHET LASHING - TWO PART

Ratchet Lashing has a two part system consists of a short part and a long part with a tensioning device provided on the short part. Variety of hooks or end fittings as shown below can be provided.

Depending upon the load requirements, the ratchet lashing systems are available in 25mm, 35mm, 50mm, 75mm and 100mm width. These are manufactured as per EN-12195-2:2000 standards.

ADVANTAGES OF RATCHET LASHING SYSTEMS

- Webbing does not weaken with age.
- Ability to absorb shocks.
- Can be easily checked by eye for damages.
- Low risk of damage to finished product.
- Easy and quick to use, saves time and cost.
- Suppleness of polyester accommodates regularities of the load.



**Secure Lift Ratchet Tie-Down Straps-
25mm x 1000kg (LC) (Without Handle)**

VSPL/RL2P/25/01.0T

1-ton ratchet strap are designed for use on light commercial and domestic with loads up to 1000kg. Certified to EN-12195-2



**Secure Lift Ratchet Tie-Down Straps-
25mm x 1000kg (LC)**

VSPL/RL2P/25/01.0T

1-ton ratchet strap are designed for use on light commercial and domestic with loads up to 1000kg. Certified to EN-12195-2



**Secure Lift Ratchet Tie-Down Straps -
35mm x 2000kg (LC)**

VSPL/RL2P/35/02.0T

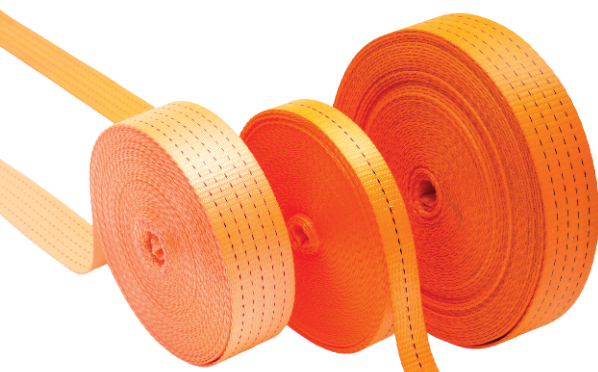
2 ton ratchet straps are designed for use on trailers and HGVs with loads up to 2000kg. Claw hook on each end.



**Secure Lift Ratchet Tie-Down Straps -
35mm x 3000kg (LC)**

VSPL/RL2P/35/03.0T

A 3 tonne heavy duty tie down ratchet strap with heavy duty delta ends.



Every Lift Begins
With Confidence



**Secure Lift Ratchet Tie-Down Straps -
50mm x 2000kg (LC)**

VSPL/RL2P/50/02.0T

2 ton ratchet straps are designed for use on trailers and HGVs with loads up to 2000kg. Claw hook on each end.



**Secure Lift Ratchet Tie-Down Straps -
50mm x 4000kg (LC)**

VSPL/RL2P/50/04.0T

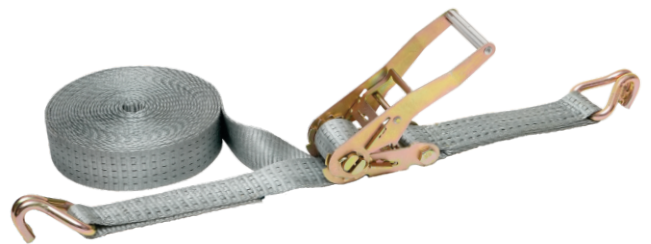
4 ton ratchet straps are designed for use on trailers and HGVs with loads up to 4000kg. Certified to EN-12195-2.



**Secure Lift Ratchet Tie-Down Straps -
50mm x 4000kg (LC)**

VSPL/RL2P/50/04.0T

4 ton ratchet straps are designed for use on trailers and HGVs with loads up to 4000kg. Certified to EN-12195-2.



**Secure Lift Ratchet Tie-Down Straps -
50mm x 5000kg (LC)**

VSPL/RL2P/50/05.0T

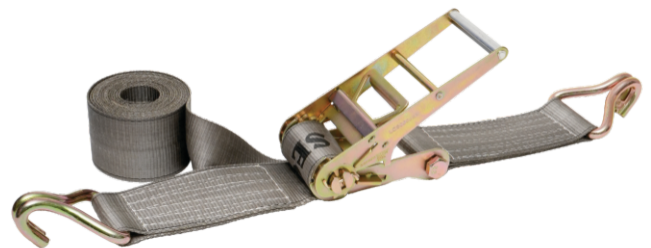
5 ton ratchet straps are designed for use on trailers and HGVs with loads up to 5000kg. Claw hooks on each end.



**Secure Lift Ratchet Tie-Down Straps-
75mm x 8000kg (LC)**

VSPL/RL2P/75/08.0T

8-ton ratchet strap are designed for use on light commercial and domestic with loads up to 8000kg. Certified to EN-12195-2



**Secure Lift Ratchet Tie-Down Straps-
100mm x 10,000kg**

VSPL/RL2P/100/10.0T

Secure Lift Ratchet Strap 100mm. 10,000kg load with durable webbing, ideal for heavy-duty, industrial, and commercial cargo transport.



High Performance Meets
High Reliability

RATCHET LASHING - ENDLESS

Ratchet Lashing (Endless) comprises of a tensioning device which is attached to the webbing. It is used for bundling purpose. This system can be provided in widths of 25mm, 50mm, 75mm, 100mm and up to any length. These are manufactured as per EN-12195-2:2000 standards.



Secure Lift Ratchet Tie-Down Straps - 25mm x 1000kg (LC) (Without Handle)

VSPL/RLE/25/01.0T

1ton ratchet straps are designed for use on trailers and HGVs with loads up to 1000kg. Certified to EN-12195-2.



Secure Endless Ratchet Strap 25mm x 1000kg

VSPL/RLE/25/01.0T

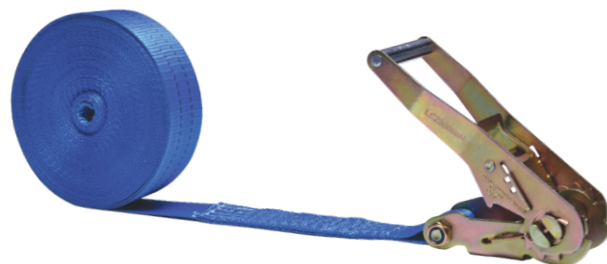
High-quality Endless Ratchet Straps with strong polyester webbing. EN12195-2:2001



Secure Lift Ratchet Tie-Down Straps- 35mm x 3000kg (LC)

VSPL/RLE/35/03.0T

3-ton ratchet strap are designed for use on light commercial and domestic with loads up to 3000kg. Certified to EN-12195-2



Secure Endless Ratchet Strap 50mm x 2000kg

VSPL/RLE/50/02.5T

High-quality Endless Ratchet Straps with strong polyester webbing. EN12195-2:2001



Secure Endless Ratchet Strap 50mm x 4000kg

VSPL/RLE/50/04.0T

Designed with strength in mind, these 500kg cam buckle straps are a powerful way to quickly and easily secure smaller loads.



Secure Lift Ratchet Tie-Down Straps - 50mm x 5000kg (LC)

VSPL/RLE/50/05.0T

5 ton ratchet straps are designed for use on trailers and HGVs with loads up to 5000kg. Claw hooks on each end.

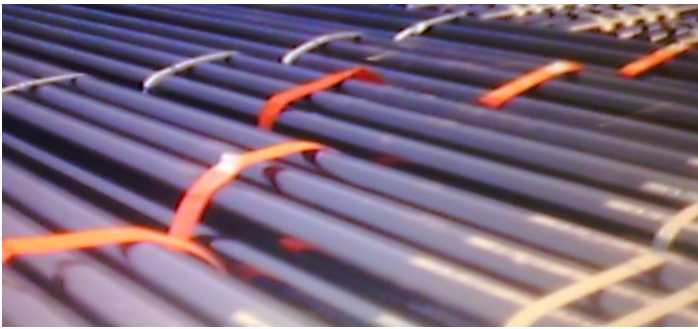
FLAT WEBBING ENDLESS SLING

These slings consist of webbing which is either sewn to each other at end or woven endless without a seam. These are the most versatile slings as its hook and load contact point can be rotated.

These slings are especially used in lifting 'Pipe bundles' manufactured for export purposes. These slings can be put in the product and once the product reaches its destination, it can provide the most economical, safe and efficient mode of lifting.

Width: 25mm – 100mm

Working Load Limit (WLL): 0.5Ton – 5Ton

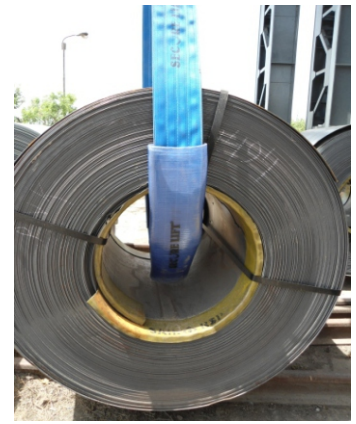


CAPACITY CHART (FLAT WEBBING ENDLESS SLING)

S. No.	Flat Web Endless Loop Sling (Web Width x Capacity x Shade)	Item Code	Webbing Shade	Width mm	Capacity Kg
1.	Flat Web Endless Loop Sling (2505)	VSPL/FBEL/NWF-683(2505)	White ○	25	500
2.	Flat Web Endless Loop Sling (3575)	VSPL/FBEL/NWF-684(3575)	White ○	35	750
3.	Flat Web Endless Loop Sling (3010) - Purple	VSPL/FBEL/NWF-684a(3010)	Purple ●	30	1000
4.	Flat Web Endless Loop Sling (4010)-Orange	VSPL/FBEL/NWF-750(4010)	Orange ●	40	1000
5.	Flat Web Endless Loop Sling (44125) - Orange	VSPL/FBEL/NWF-338(44125)	Orange ●	44	1250
6.	Flat Web Endless Loop Sling (5010)-Yellow	VSPL/FBEL/NWF-571(5010)	Yellow ●	50	1000
7.	Flat Web Endless Loop Sling (50150)	VSPL/FBEL/NWF-687(50150)	White ○	50	1500
8.	Flat Web Endless Loop Sling (5020)-Green	VSPL/FBEL/NWF-688(5020)	Green ●	50	2000
9.	Flat Web Endless Loop Sling (6020) - Green	VSPL/FBEL/NWF-688a(6020)	Green ●	60	2000
10.	Flat Web Endless Loop Sling (50250)	VSPL/FBEL/NWF-689(50250)	White ○	60	2500
11.	Flat Web Endless Loop Sling (75350) - Yellow	VSPL/FBEL/NWF-690(75350)	Yellow ●	75	3500
12.	Flat Web Endless Loop Sling (10050) - Grey	VSPL/FBEL/NWF-691(10050)	Grey ●	100	5000

The main purpose to use a Protective Sleeves is to increase the life of the sling. They protect the sling from the sharp edges or rough surfaces to which they are exposed at the time of use.

They protect the life of the sling when exposed to wide abrasive surfaces such as concrete or any other rough surface.



POLYESTER WEB SLEEVES

Polyester web slings have a tendency to get damaged, abraded or cut when tension between the sling and the load (having rough/sharp surface) develops. To prevent any accidents, it is of up most importance to provide sufficient padding to the edges and abrasive surfaces. Polyester web sleeves are economical and they efficiently protect the sling from damages. They are made of same webbings which are used in making slings. These web sleeves provide extra protection to the sling without having any effect on its strength.



POLYESTER SLEEVE CAPACITY CHART

CAPACITY (Ton)	1.0	2.0	3.0	4.0	5.0	6.0	8.0	10.0	12.0
WIDTH (mm)	50	75	100	125	150	200	250	300	320
SHADE	Green ●	Yellow ●	Grey ●	Red ●	Brown ●	Blue ●	Orange ●	Orange ●	Orange ●

ANTI CUT TUBULAR SLEEVES

These sleeves are economical solutions as they are made of PVC material and have adequate wall thickness to sustain anti cut and Abrasion from sharp edges/contacts while lifting.



ANTI CUT TUBULAR SLEEVE CAPACITY CHART

CAPACITY (Ton)	1.0	2.0	3.0	4.0	5.0	6.0	8.0	10.0	12.0
WIDTH (mm)	75	75	75	150	150	225	225	300	320
TYPE	Tube	Tube	Tube	Tube	Tube	Tube	Tube	Velcro	Velcro

WHEEL LASHING

We manufacture a wide range of Automobile lashing systems for all cars, Trucks, Trailers, Earth Movers. These lashing systems are mainly used for safe transit of these vehicles.



NOTES

Lined area for notes with horizontal dashed lines.

Why Choose SECURE LIFT?

Because lifting safety isn't an option
it's a necessity.

- **Engineered for Strength**

Our products are built tough to handle the heaviest loads with confidence and precision.

- **Certified Safety Standards**

All our lifting solutions are tested and certified to meet global industry standards.

- **Reliability You Can Trust**

When the load is heavy and the stakes are high — Secure Lift never lets you down.

- **Designed for Real-World Use**

From factories to construction sites, our gear is built to perform where it matters most.

- **End-to-End Support**

From consultation to after-sales — we're with you at every step of the safety journey.

- **Customised Solutions**

We understand that every lift is different, our team offers tailored solutions to fit your needs.

- **Fast, Responsive Support**

Whether it's pre-sales guidance or post-purchase support, we're just a call away.

- **Durability that Lasts**

Made from premium materials, our products are designed for long-term use in extreme environments.

OUR ADVANTAGES



**TEAM
ADVANTAGE**



**TECHNOLOGY
ADVANTAGE**



**EXPERIENCE
ADVANTAGE**



**COST
ADVANTAGE**



**QUALITY
ADVANTAGE**



**DELIVERY
ADVANTAGE**



**SERVICE
ADVANTAGE**

■ OUR CAPABILITIES

Operating, Needle/shuttle less, Shuttle looms, Jacquard, and specialty broad Web looms, as well as, modern ranges in our dyeing and finishing departments, VIRAJ provides customers with quality products manufactured to precise specifications.

VIRAJ offers a full range of services to cover every aspect of design, production, and post-production processes. From design and prototype development, to weaving, dyeing, finishing, strap cutting, and minor assembly **Viraj Group can meet your unique product requirements.**

■ OUR POST WEAVE PROCESSING TECHNOLOGIES

- **Dye house capabilities** include yarn dyeing, small lot batch dyeing, and large lot continuous dyeing. We utilize spectrophotometer for color matching in order to minimize the time spent in the lab and increase production efficiencies. Lab dips are available through our dye lab for color matching of customer samples.
- **Finish capabilities** are heat setting, scouring, resin treating for abrasion and/or stiffness, water based Teflon®, silicone, latex, waterproof, flame treat, anti-fungal, and pre-shrinking.
- **Coating capabilities** covers UV Coating on Tapes & webbing for Arrester Barrier Nets used in arresting Air craft's.
- VIRAJ **Strap cutting** department offers custom length cutting, sealing & hole punching. As a result of VIRAJ strong commitment to quality, the company has developed a top rate in house lab testing facility.
- **Test reports** and **Certificates** of conformance to the specifications are available upon request. Tests available include, but not limited to, tensile, elongation, color fastness, abrasion, etc.



SECURE LIFT®

We Secure Your Load Needs



VIRAJ SYNTEX PVT. LTD.

UNIT-1: Plot No. C-36, UPSIDC Industrial Area, Rooma, Kanpur - 209402 (U.P.) India.

UNIT-2: Panki Industrial Area, Site-III, Kanpur-209402 (U.P.) India.

+91- 9838075687 | 9839803488